

# NOVELTIES

2026



**MONOPOLE**  
CERÁMICA



# INDEX














## BY READABILITY

LUGANO 60X120	4
AURA 60X120	10
ZELLIGE 22,3X22,3	16
MARRAKECH ZELLIGE 22,3X22,3	22
MAISON 22,3X22,3	28
MELODY 20X20	32
SANTORINI 20X20	38
ANTIBES 10X10	42
CAPRI 5X30	46

## BY FORMATS

60x120	4
22,3x22,3	16
20x20	32
10x10	42
5x30	46

## SIMBOLOGÍA · SYMBOLOGY

-  REVESTIMIENTO · WALL TILES
-  PAVIMENTO · FLOOR TILES
-  MATE · MATT
-  BRILLO · GLOSSY
-  LAPPATO · LAPPATO
-  EFECTOS ESPECIALES · SPECIAL EFFECTS
-  PORCELÁNICO · PORCELAIN TILES
-  RESISTENCIA AL HIELO · FROST RESISTANCE
-  LISO · FLAT
-  RELIEVE · RELIEF
-  DESTONIFICADO · MULTI-SHADED
-  RECTIFICADO · RECTIFIED
-  BRILLO EN VETA · GLOSS IN VEIN



CARACTERÍSTICAS TÉCNICAS Y EMBALAJE · TECHNICAL CHARACTERISTICS & PACKING

RECTIFICADO · RECTIFIED  
CARVING · CARVING

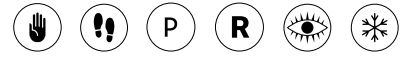


Formato Size	Piezas caja Tiles/box	M2/caja Sqm/box	Kg/caja Kg/box	Cajas/pallet Boxes/pallet	M2/pallet Sqm/pallet	Kg/pallet Kg/pallet
60x120 cm · 24x48" Work size 59,5x120	2	1,428	30,62	40	57,12	1250

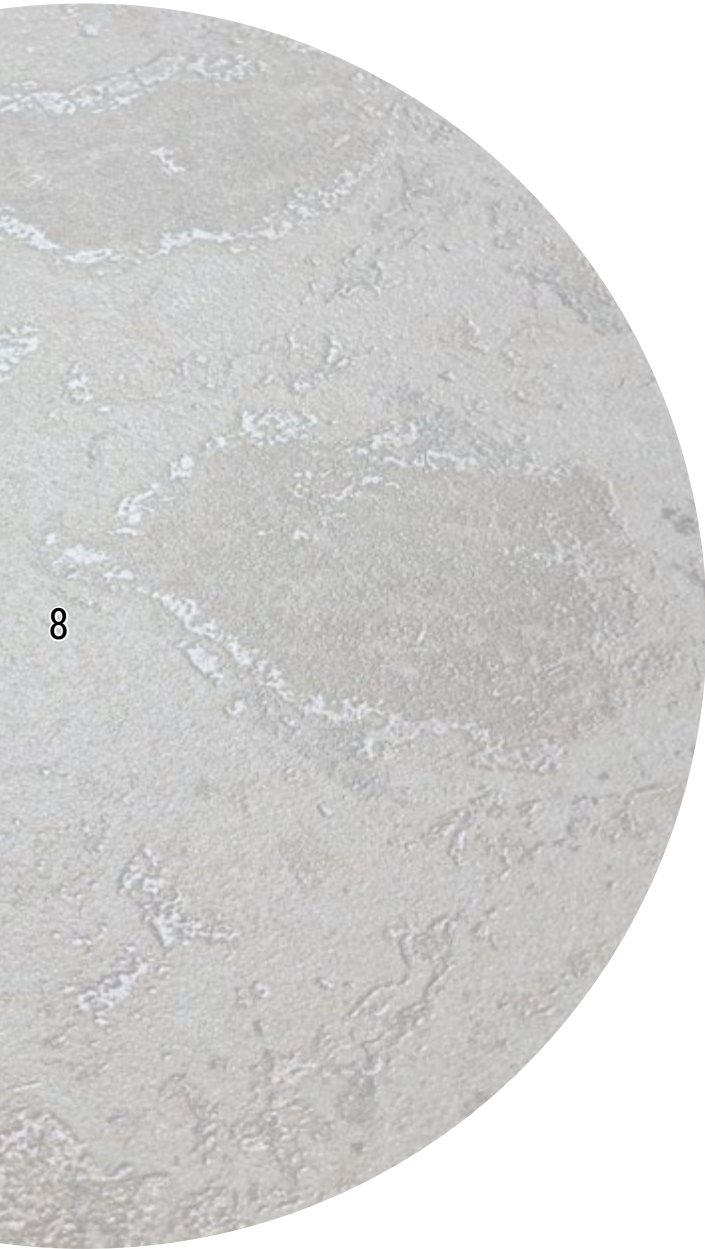
Datos aproximados, confirmar cada referencia · Approximate data, confirm each reference



# Lugano 60x120 · 24x48" R



PORCELAIN TILE · RECTIFIED · CARVING



8



Lugano Blanco 60x120 R · 24x48"  
B06



Lugano Gris 60x120 R · 24x48"  
B06



Lugano Beige 60x120 R · 24x48"  
B06



Lugano Vulcano 60x120 R · 24x48"  
B07



Lugano Gris

20 DIFFERENT FACES



...

9



10

11

CARACTERÍSTICAS TÉCNICAS Y EMBALAJE · TECHNICAL CHARACTERISTICS & PACKING

RECTIFICADO · RECTIFIED  
ACABADO LAPPATO · LAPPATO FINISH



Formato Size	Piezas caja Tiles/box	M2/caja Sqm/box	Kg/caja Kg/box	Cajas/pallet Boxes/pallet	M2/pallet Sqm/pallet	Kg/pallet Kg/pallet
Lappato 60x120 cm · 24x48" Work size 59,5x120	2	1,404	33,76	36	50,55	1215

Datos aproximados, confirmar cada referencia · Approximate data, confirm each reference



Aura Beige 60x120 R -24x48"

12



Aura Beige 60x120 R -24x48"



Aura Blanco 60x120 R -24x48"

13

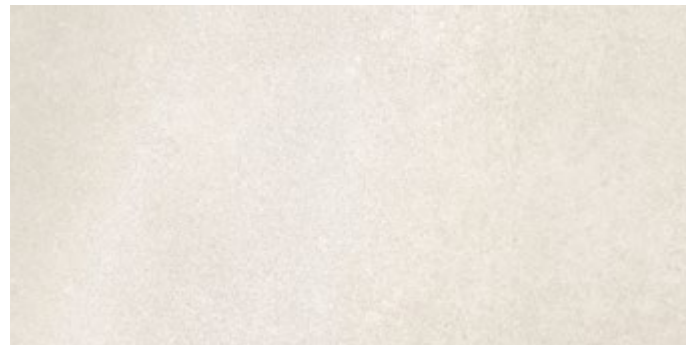
# Aura Lappato 60x120 R



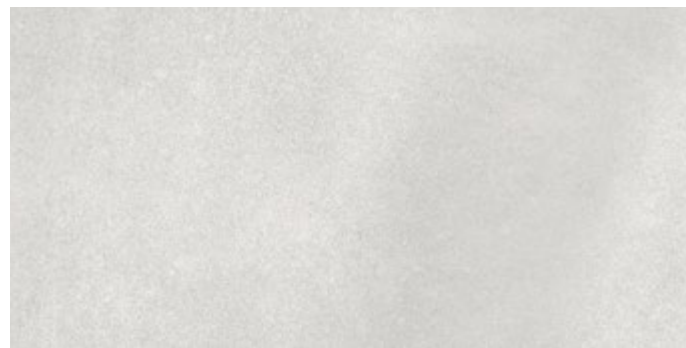
PORCELAIN TILE · RECTIFIED · LAPPATO



Aura Blanco  
60x120 R · 24x48"  
B01

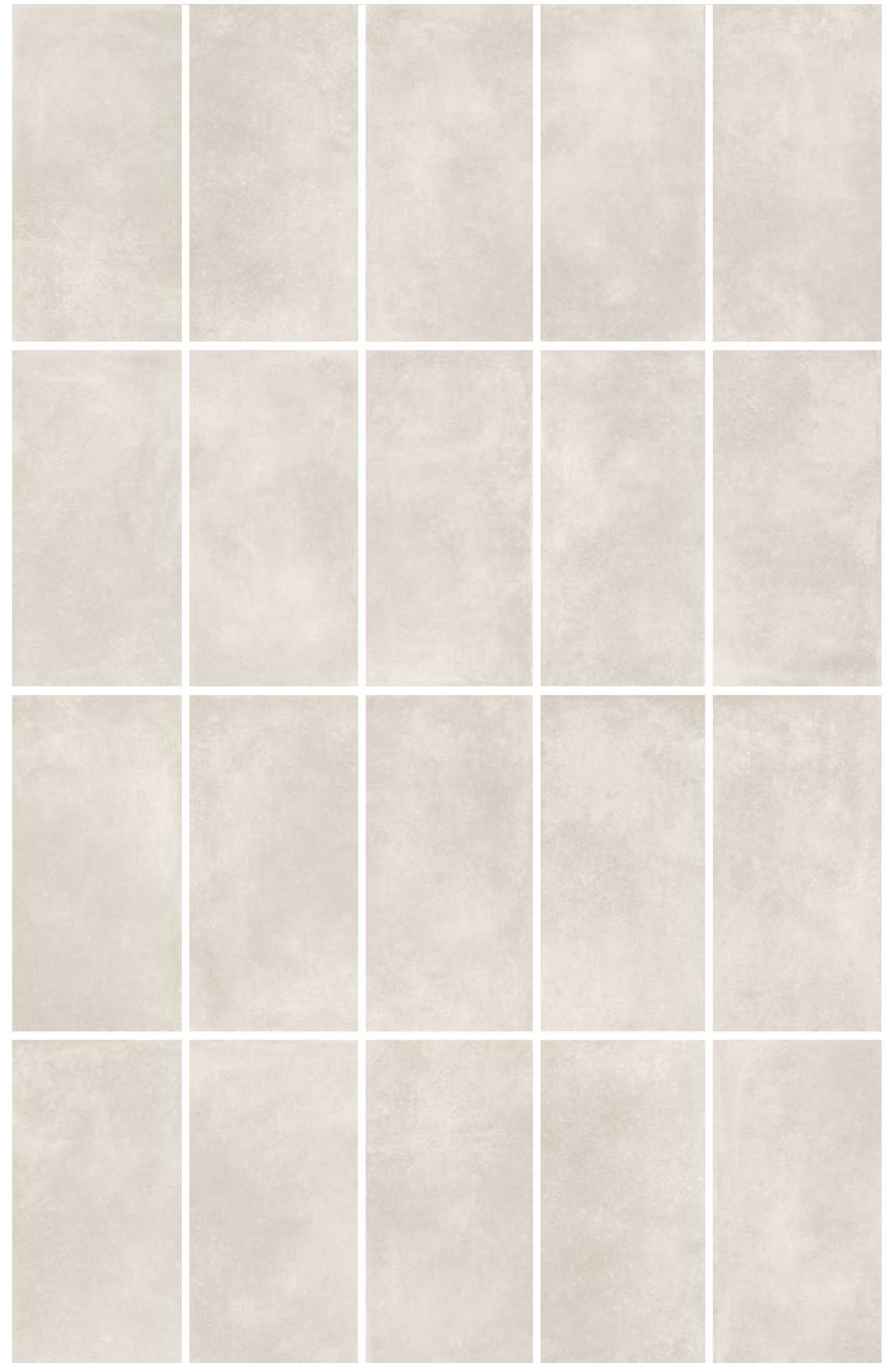


Aura Beige  
60x120 R · 24x48"  
B01



Aura Gris  
60x120 R · 24x48"  
B01

20 DIFFERENT FACES



# Zellige

22,3x22,3 · 8,7x8,7" PORCELAIN TILE



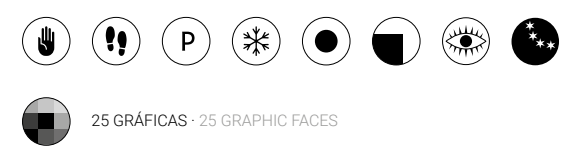
16

17

Zellige Casablanca & Fez 22,3x22,3 · 8,7x8,7"

## CARACTERÍSTICAS TÉCNICAS Y EMBALAJE · TECHNICAL CHARACTERISTICS & PACKING

EFFECTO MATE · MATT EFFECT  
LISO · FLAT  
EFECTOS ESPECIALES · SPECIAL EFFECTS



25 GRÁFICAS · 25 GRAPHIC FACES

Formato Size	Piezas caja Tiles/box	M2/caja Sqm/box	Kg/caja Kg/box	Cajas/pallet Boxes/pallet	M2/pallet Sqm/pallet	Kg/pallet Kg/pallet
22,3x22,3 · 8,7x8,7	23	1,14	23,2	45	51,3	1045

Datos aproximados, confirmar cada referencia · Approximate data, confirm each reference  
No calibrado, junta mínima de 2 mm. · Not calibrated, minimum joint 2 mm.



Zellige Asilah 22,3X22,3 - 8,7X8,7"

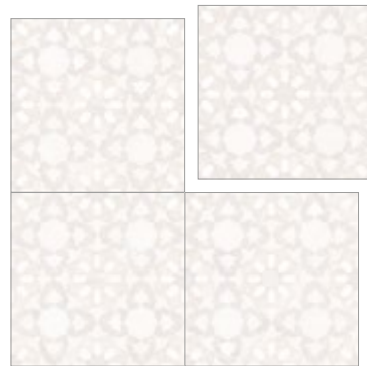


Zellige Rabat 22,3X22,3 - 8,7X8,7"

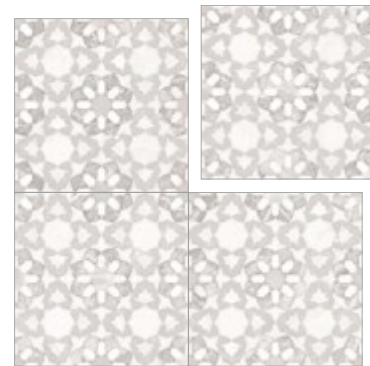
# Zellige 22,3x22,3 · 8,7X8,7"



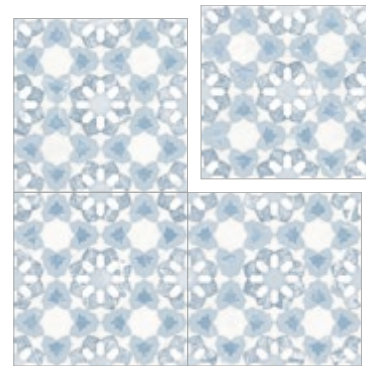
25 DIFFERENT FACES MIXED IN THE BOX



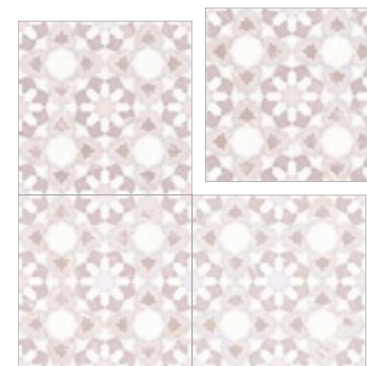
Zellige Casablanca  
22,3X22,3 · 8,7X8,7"  
B26



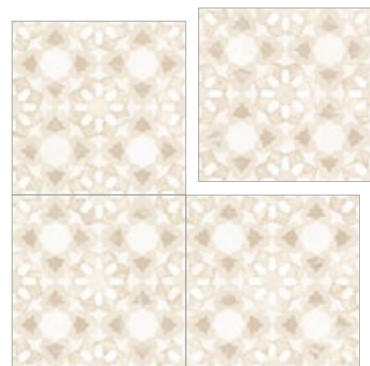
Zellige Tetuan  
22,3X22,3 · 8,7X8,7"  
B26



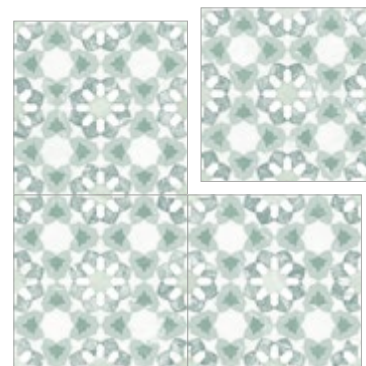
Zellige Tanger  
22,3X22,3 · 8,7X8,7"  
B26



Zellige Asilah  
22,3X22,3 · 8,7X8,7"  
B26

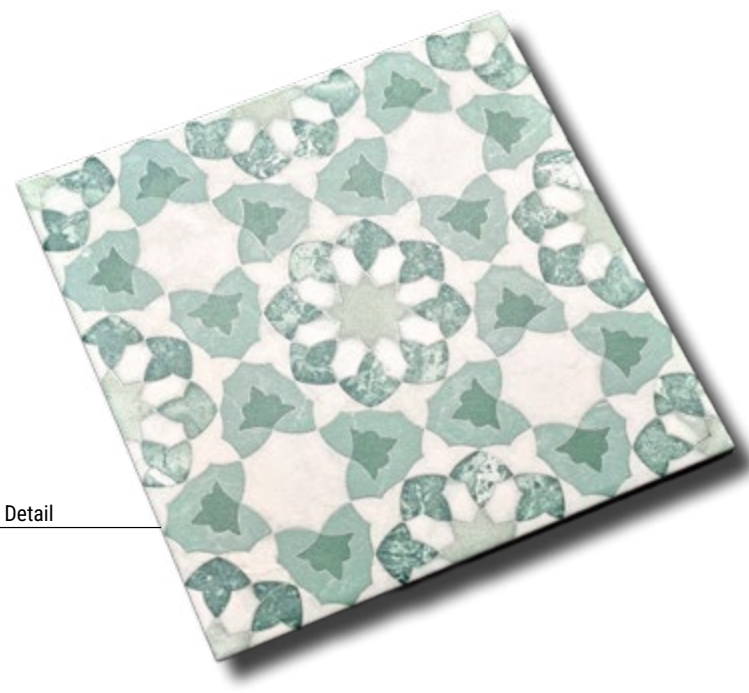
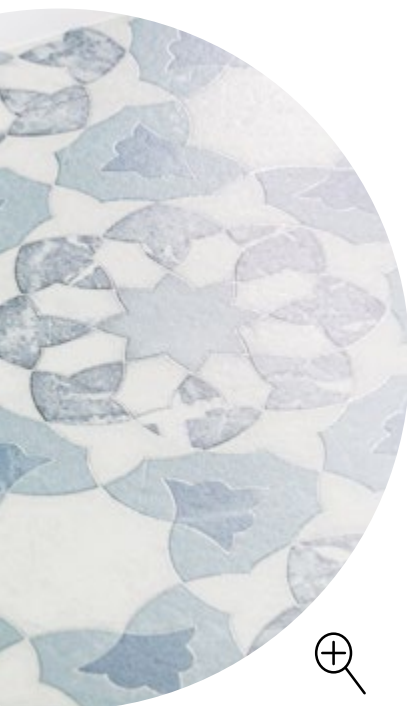


Zellige Fez  
22,3X22,3 · 8,7X8,7"  
B26



Zellige Rabat  
22,3X22,3 · 8,7X8,7"  
B26

20



Detail



21

# Marrakech Zellige 22,3X22,3

PORCELAIN TILE



## CARACTERÍSTICAS TÉCNICAS Y EMBALAJE · TECHNICAL CHARACTERISTICS & PACKING

EFFECTO MATE · MATT EFFECT  
LISO · FLAT

EFFECTOS ESPECIALES · SPECIAL EFFECTS



25 GRÁFICAS · 25 GRAPHIC FACES

Formato Size	Piezas caja Tiles/box	M2/caja Sqm/box	Kg/caja Kg/box	Cajas/pallet Boxes/pallet	M2/pallet Sqm/pallet	Kg/pallet Kg/pallet
22,3x22,3 · 8,7x8,7	23	1,14	23,2	45	51,3	1045

Datos aproximados, confirmar cada referencia · Approximate data, confirm each reference  
No calibrado, junta mínima de 2 mm. · Not calibrated, minimum joint 2 mm.

24



Marrakech Zellige Kasbah 22,3X22,3 · 8,7X8,7"

25



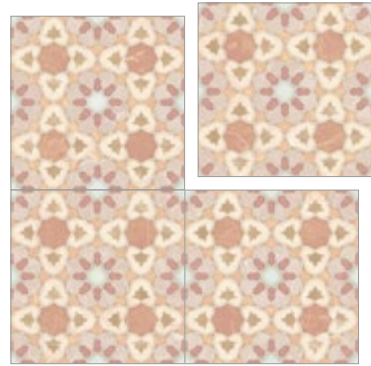
Marrakech Zellige Gueliz 22,3X22,3 · 8,7X8,7"

# Marrakech Zellige 22,3X22,3 · 8,7x8,7"



25 GRÁFICAS · 25 GRAPHIC FACES    PORCELAIN TILE · MATT

25 DIFFERENT FACES MIXED IN THE BOX



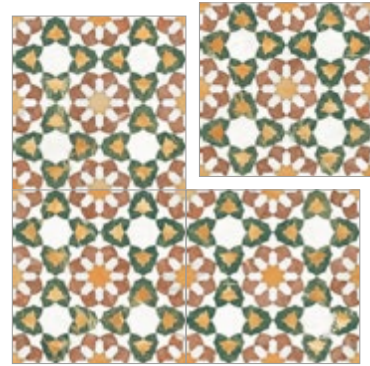
Marrakech Zellige Medina  
22,3X22,3 · 8,7X8,7"

B26



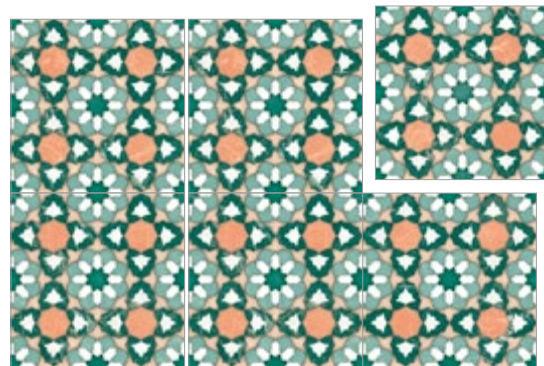
Marrakech Zellige Hivernage  
22,3X22,3 · 8,7X8,7"

B26



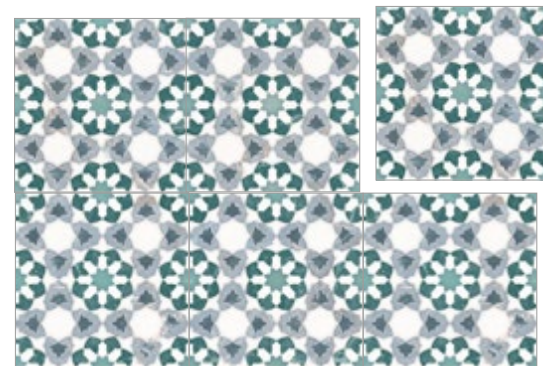
Marrakech Zellige Ourika  
22,3X22,3 · 8,7X8,7"

B26



Marrakech Zellige Kasbah  
22,3X22,3 · 8,7X8,7"

B26



Marrakech Zellige Gueliz  
22,3X22,3 · 8,7X8,7"

B26



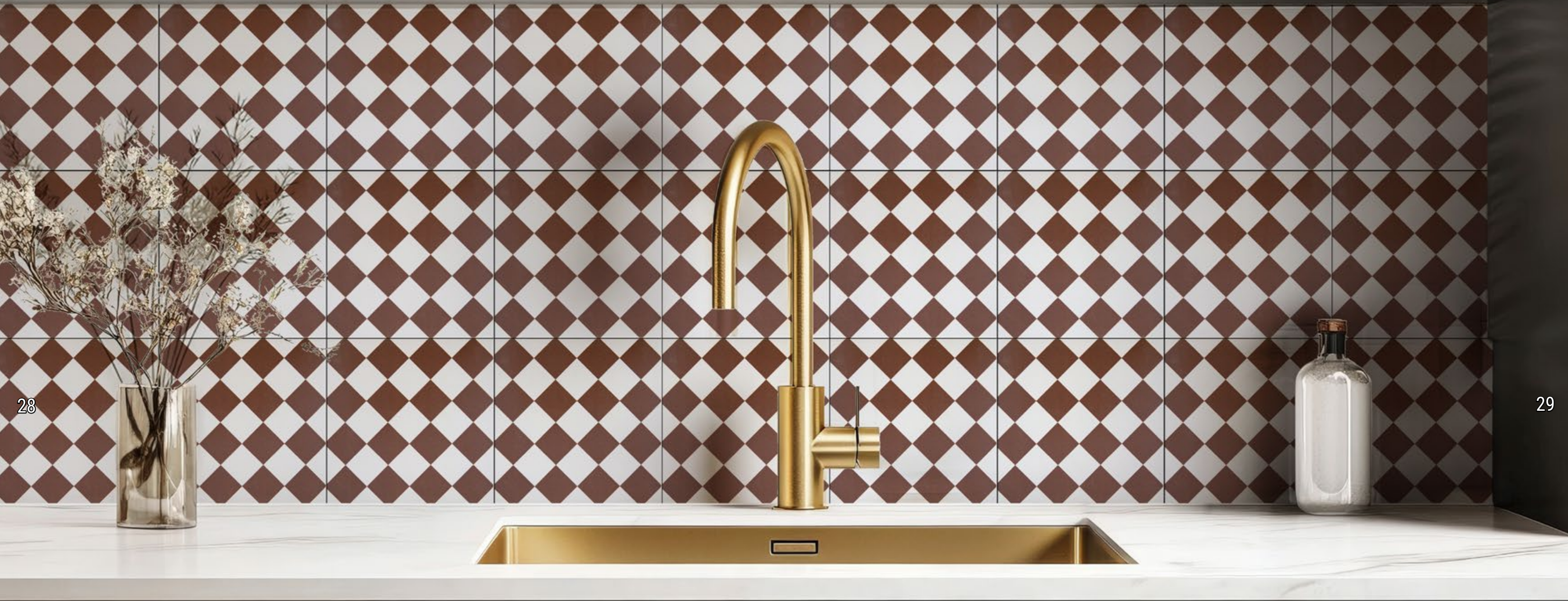
DETAIL  
Marrakech Zellige Ourika  
22,3X22,3 · 8,7X8,7"



Marrakech Zellige Medina 22,3X22,3 · 8,7X8,7"

# Maison

22,3x22,3 · 8,7x8,7" PORCELAIN TILE



28

29

## CARACTERÍSTICAS TÉCNICAS Y EMBALAJE · TECHNICAL CHARACTERISTICS & PACKING

EFFECTO MATE · MATT EFFECT  
LISO · FLAT

EFFECTOS ESPECIALES · SPECIAL EFFECTS

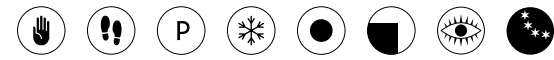


25 GRÁFICAS · 25 GRAPHIC FACES

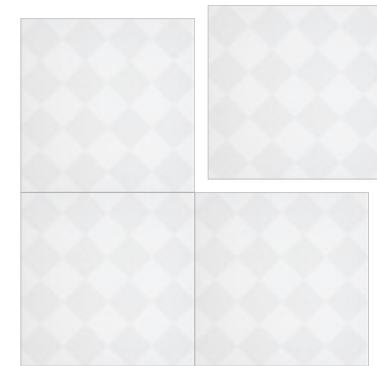
Formato Size	Piezas caja Tiles/box	M2/caja Sqm/box	Kg/caja Kg/box	Cajas/pallet Boxes/pallet	M2/pallet Sqm/pallet	Kg/pallet Kg/pallet
22,3x22,3 · 8,7x8,7	23	1,14	23,2	45	51,3	1045

Datos aproximados, confirmar cada referencia · Approximate data, confirm each reference  
No calibrado, junta mínima de 2 mm. · Not calibrated, minimum joint 2 mm.

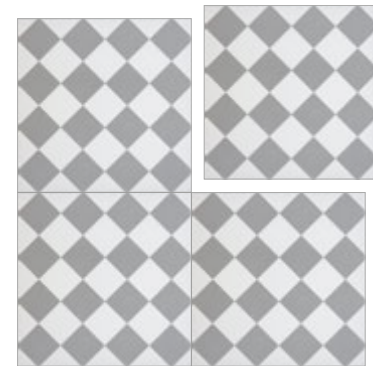
# Maison 22,3x22,3 · 8,7X8,7"



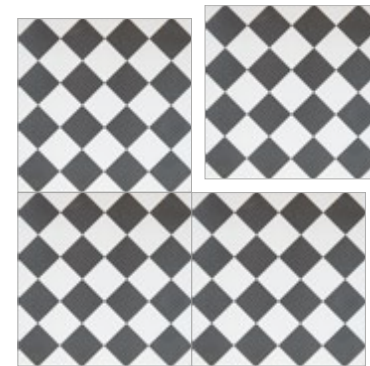
PORCELAIN TILE · MATT



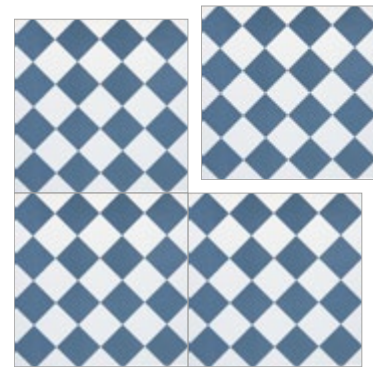
Maison White  
22,3X22,3 · 8,7X8,7"  
B26



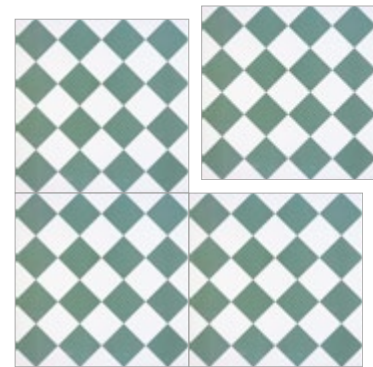
Maison Grey  
22,3X22,3 · 8,7X8,7"  
B26



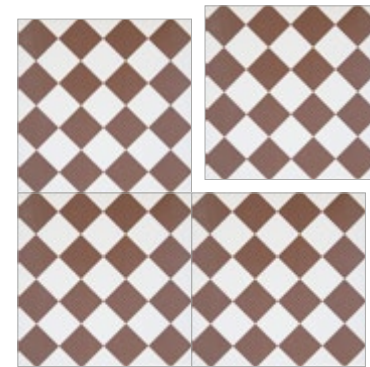
Maison Black  
22,3X22,3 · 8,7X8,7"  
B26



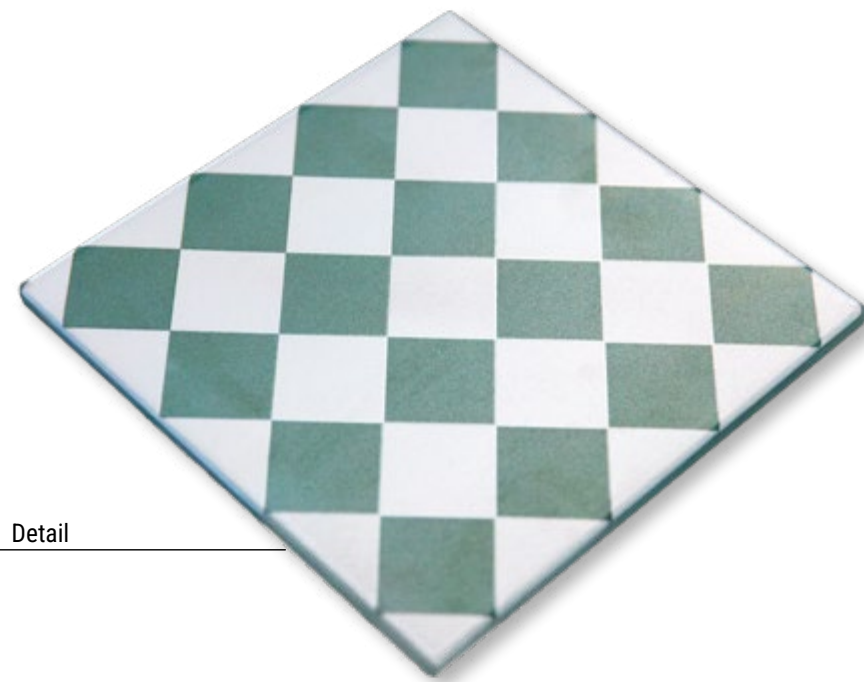
Maison Blue  
22,3X22,3 · 8,7X8,7"  
B26



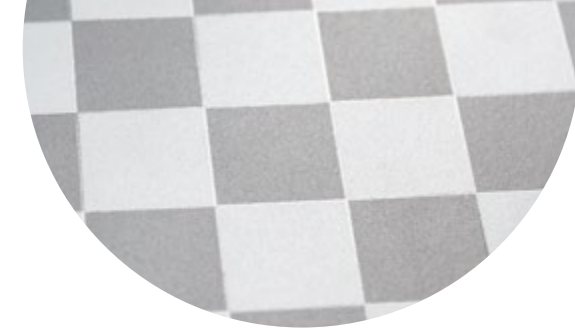
Maison Green  
22,3X22,3 · 8,7X8,7"  
B26



Maison Brown  
22,3X22,3 · 8,7X8,7"  
B26



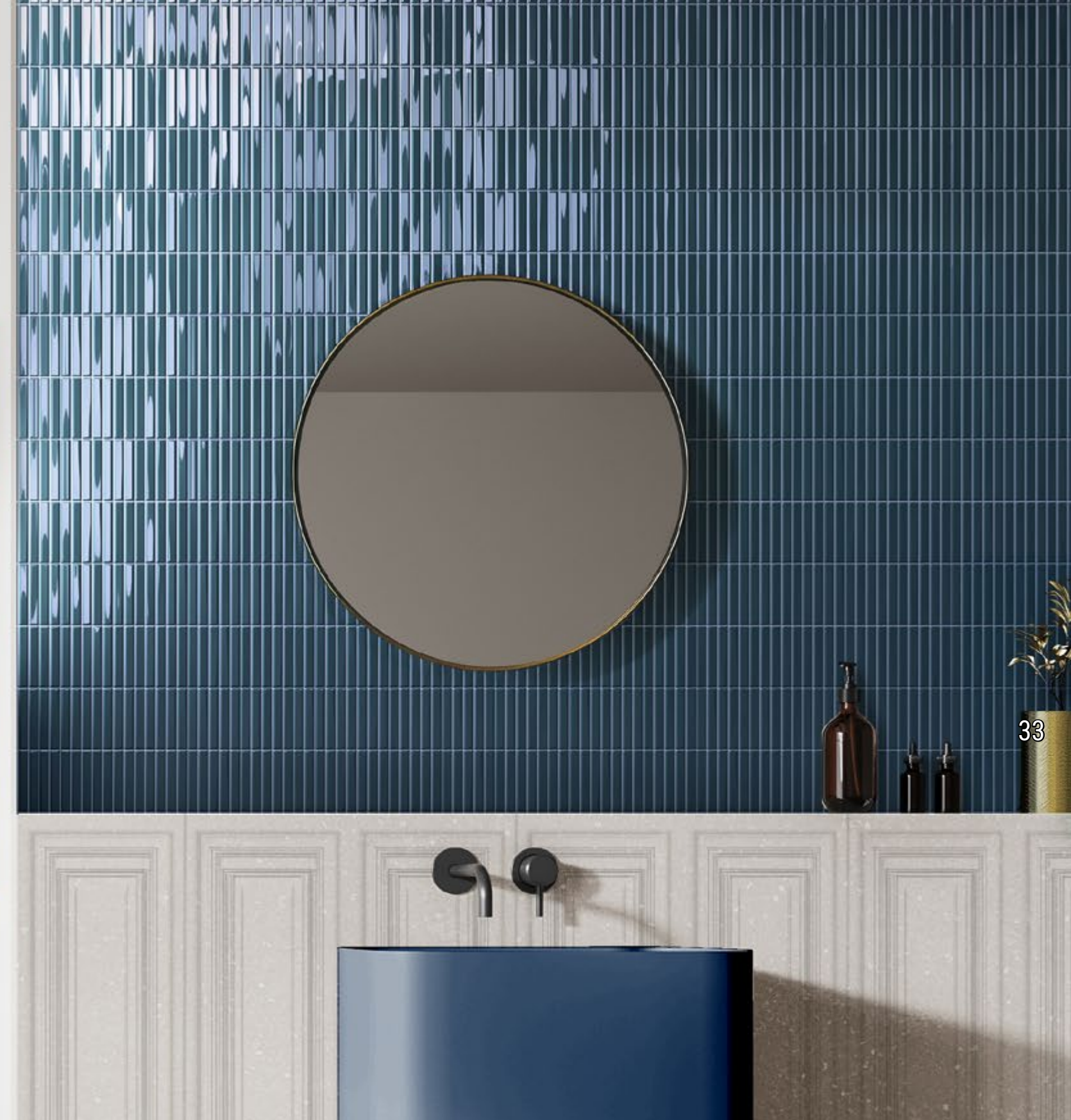
Detail



Maison White 22,3X22,3 · 8,7X8,7"

# Melody 20X20 · 8x8"

WB TILE



32

33

Melody Blue 20x20 · 8x8"

## CARACTERÍSTICAS TÉCNICAS Y EMBALAJE · TECHNICAL CHARACTERISTICS & PACKING

EFFECTO BRILLO · GLOSSY EFFECT  
ACABADO ESMALTE ESPECIAL · SPECIAL ENAMEL FINISH (ROYAL GREEN)

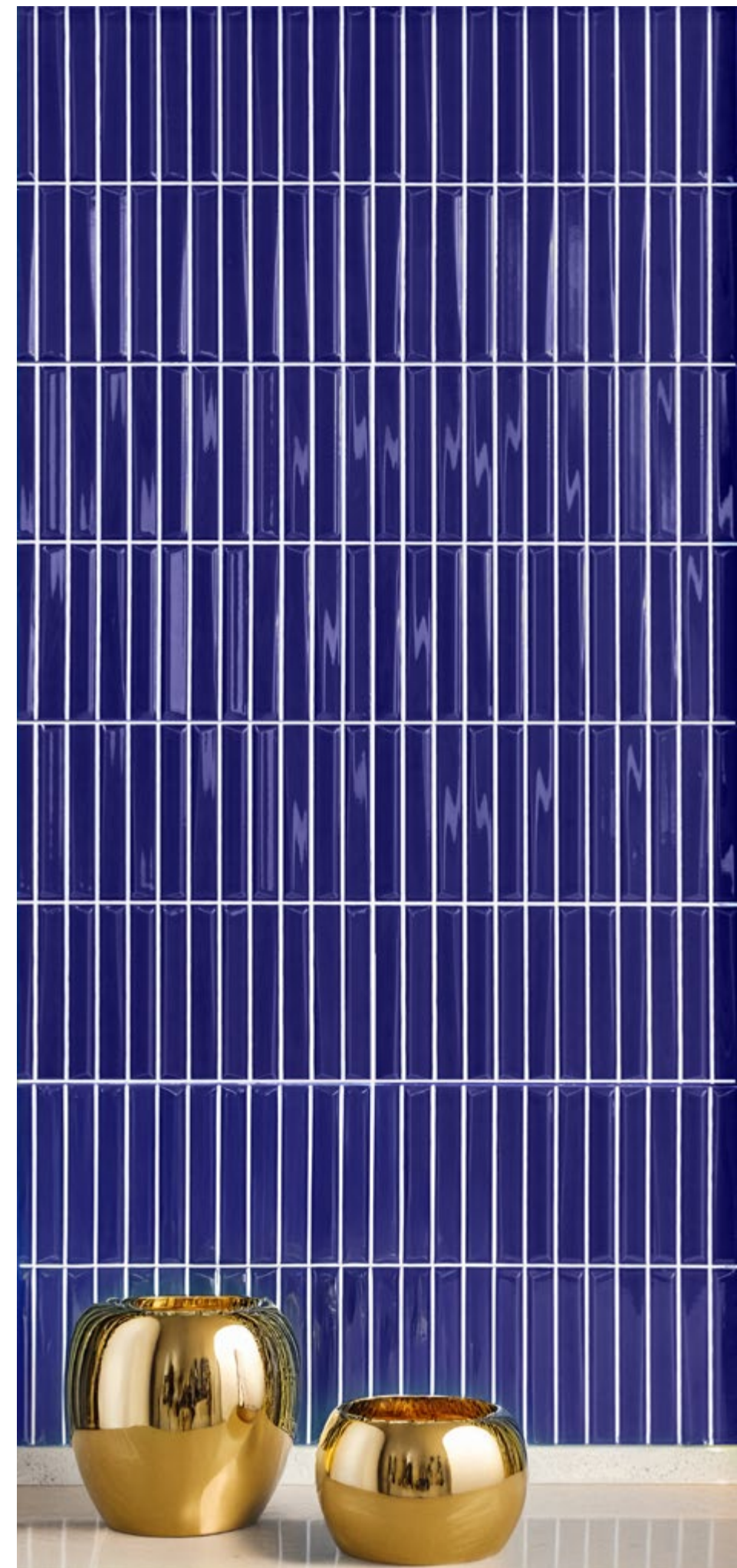


Formato Size	Piezas caja Tiles/box	M2/caja Sqm/box	Kg/caja Kg/box	Cajas/pallet Boxes/pallet	M2/pallet Sqm/pallet	Kg/pallet Kg/pallet
20x20 cm · 8x8"	25	1,00	13,6	60	60	830

Datos aproximados, confirmar cada referencia · Approximate data, confirm each reference

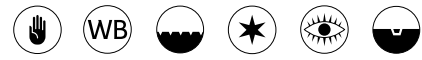


Melody Cotto 20x20 & Zellige Faz 22,3x22,3 - 8,7x8,7"

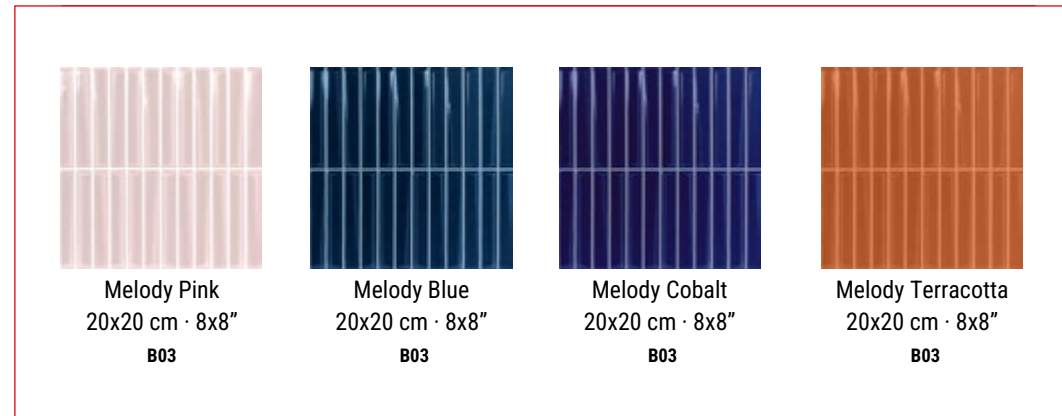


Melody Cobalt 20x20

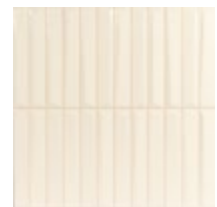
# Melody 20X20 · 8x8"



NEW COLORS



Melody White  
20x20 cm · 8x8"  
002899-B03



Melody Sand  
20x20 cm · 8x8"  
002904-B03



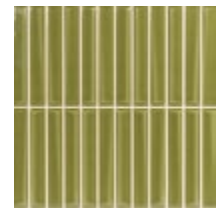
Melody Grey  
20x20 cm · 8x8"  
002900-B03



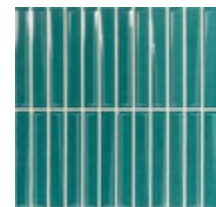
Melody Sky  
20x20 cm · 8x8"  
002906-B03



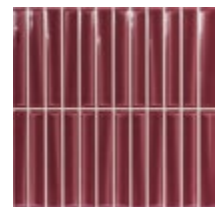
Melody Emerald  
20x20 cm · 8x8"  
002903-B03



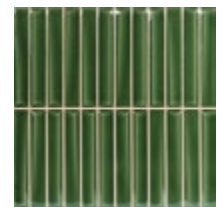
Melody Olive  
20x20 cm · 8x8"  
002943-B03



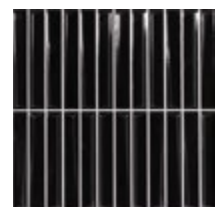
Melody Turquoise  
20x20 cm · 8x8"  
002905-B03



Melody Bourdeaux  
20x20 cm · 8x8"  
002927-B03



Melody Royal Green  
20x20 cm · 8x8"  
002907-B09



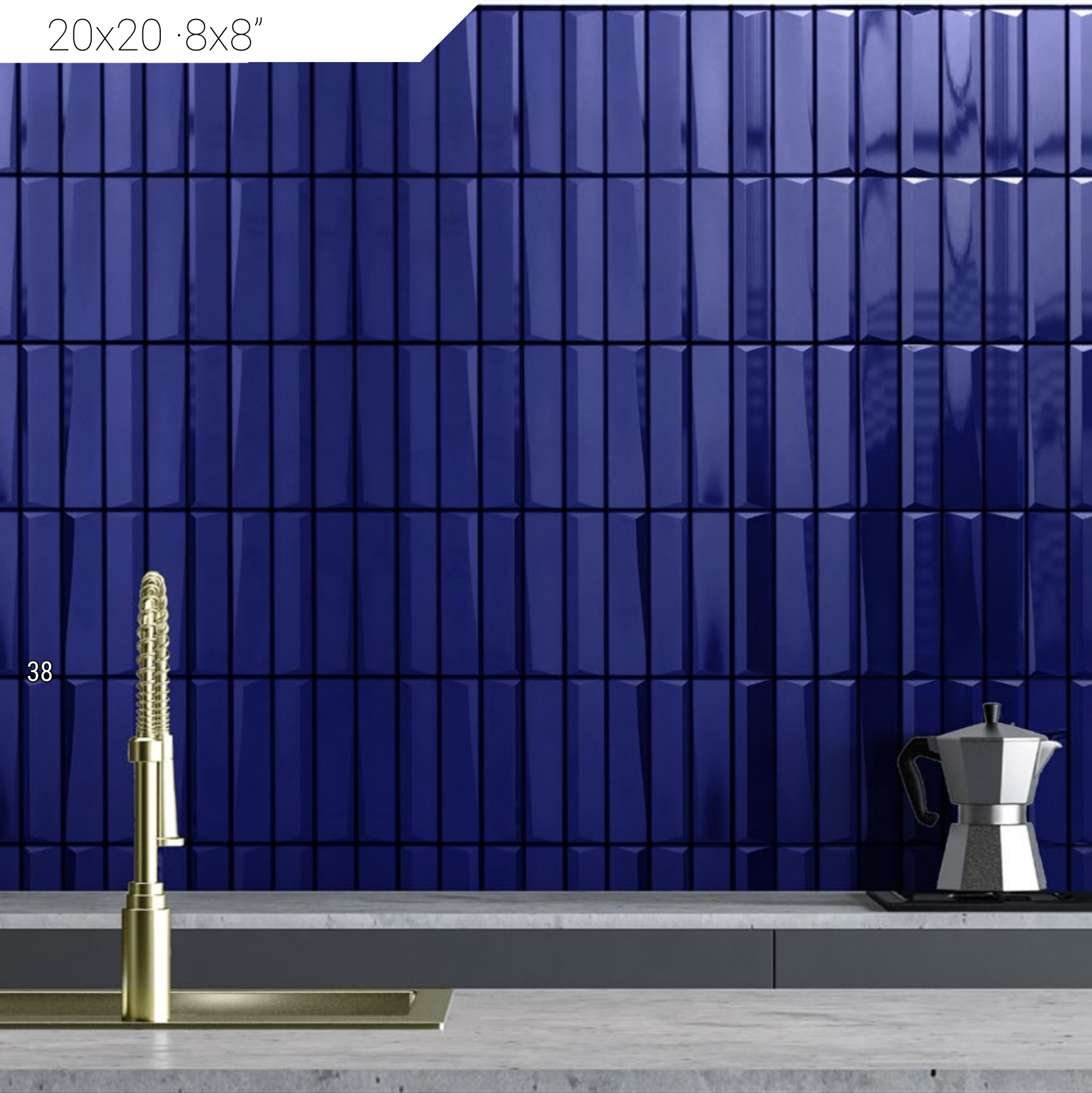
Melody Black  
20x20 cm · 8x8"  
002926-B03



Melody Pink 20x20 & Zellige Alisbah 22,3x22,3

Santorini WB TILE

20x20 · 8x8"



38



CARACTERÍSTICAS TÉCNICAS Y EMBALAJE · TECHNICAL CHARACTERISTICS & PACKING







EFFECTO BRILLO · GLOSSY EFFECT  
ACABADO ESMALTE ESPECIAL · SPECIAL ENAMEL FINISH (ROYAL GREEN)

2 Different Relief

Formato Size	Piezas caja Tiles/box	M2/caja Sqm/box	Kg/caja Kg/box	Cajas/pallet Boxes/pallet	M2/pallet Sqm/pallet	Kg/pallet Kg/pallet
20x20 cm · 8x8"	25	1,00	13,6	60	60	830

Datos aproximados, confirmar cada referencia · Approximate data, confirm each reference

# Santorini 20x20 · 8x8"

      2 Different Relief



Santorini White  
20x20 · 8x8"  
B03



Santorini Beige  
20x20 · 8x8"  
B03



Santorini Pink  
20x20 · 8x8"  
B03



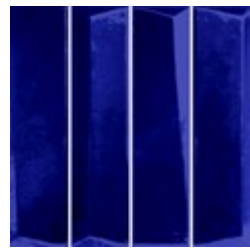
Santorini Burgundy  
20x20 · 8x8"  
B03



Santorini Terracotta  
20x20 · 8x8"  
B03



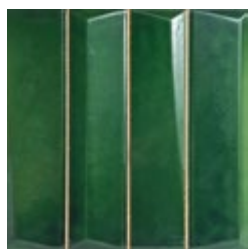
Santorini Sage  
20x20 · 8x8"  
B03



Santorini Cobalt  
20x20 · 8x8"  
B09

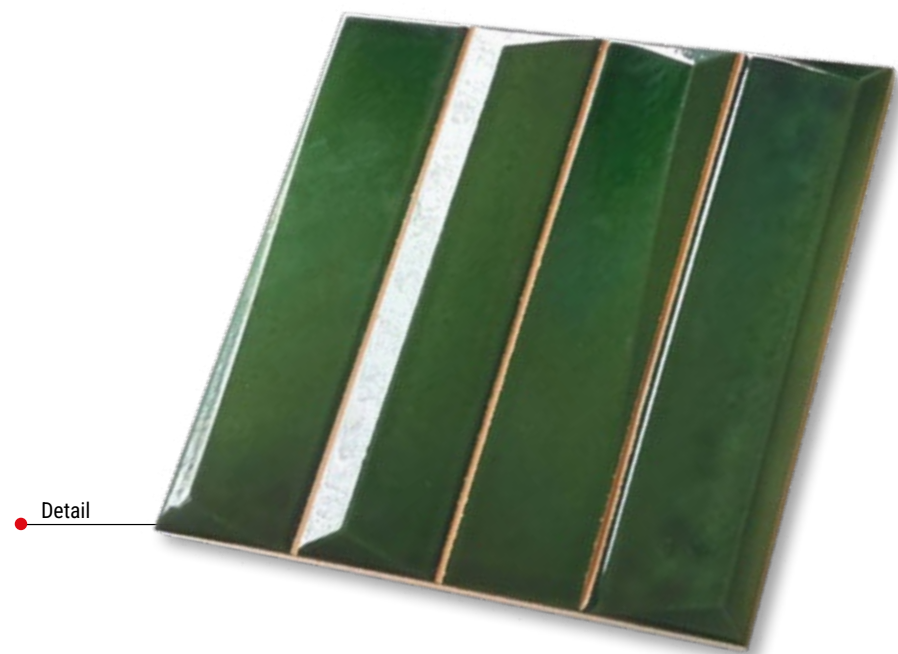


Santorini Mustard  
20x20 · 8x8"  
B09



Santorini  
Victorian Green  
20x20 · 8x8"  
B09

40



Detail



Santorini Burgundy 20x20

# Antibes 10X10 · 4x4"

WB TILE

## CARACTERÍSTICAS TÉCNICAS Y EMBALAJE · TECHNICAL CHARACTERISTICS & PACKING

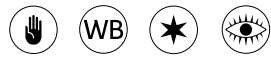
EFFECTO BRILLO · GLOSSY EFFECT  
DESTONIFICADO · DETONIFIED



Formato Size	Piezas caja Tiles/box	M2/caja Sqm/box	Cajas/pallet Boxes/pallet	M2/pallet Sqm/pallet	Kg/pallet Kg/pallet
10x10 cm · 4x4"	50	0,5	200	100	1,540

Datos aproximados, confirmar cada referencia · Approximate data, confirm each reference

# Antibes 10X10 · 4x4"



Antibes White  
10x10 cm · 4x4"



Antibes Sand  
10x10 cm · 4x4"



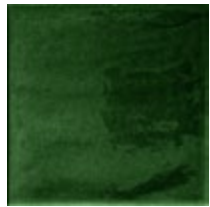
Antibes Pink  
10x10 cm · 4x4"



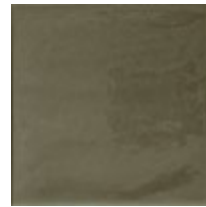
Antibes Cobalt  
10x10 cm · 4x4"



Antibes Mustard  
10x10 cm · 4x4"



Antibes Victorian Green  
10x10 cm · 4x4"



Antibes Sage  
10x10 cm · 4x4"

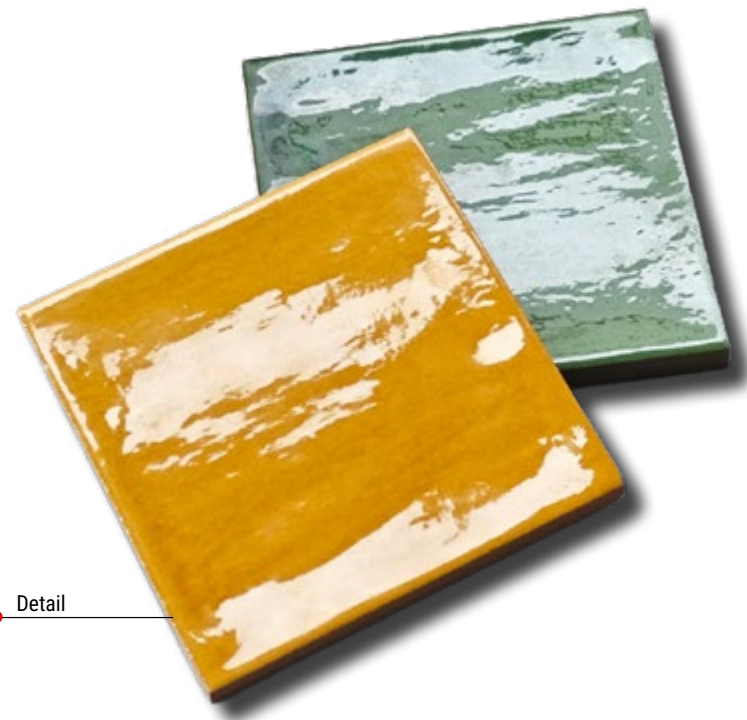


Antibes Terracotta  
10x10 cm · 4x4"



Antibes Burgundy  
10x10 cm · 4x4"

44



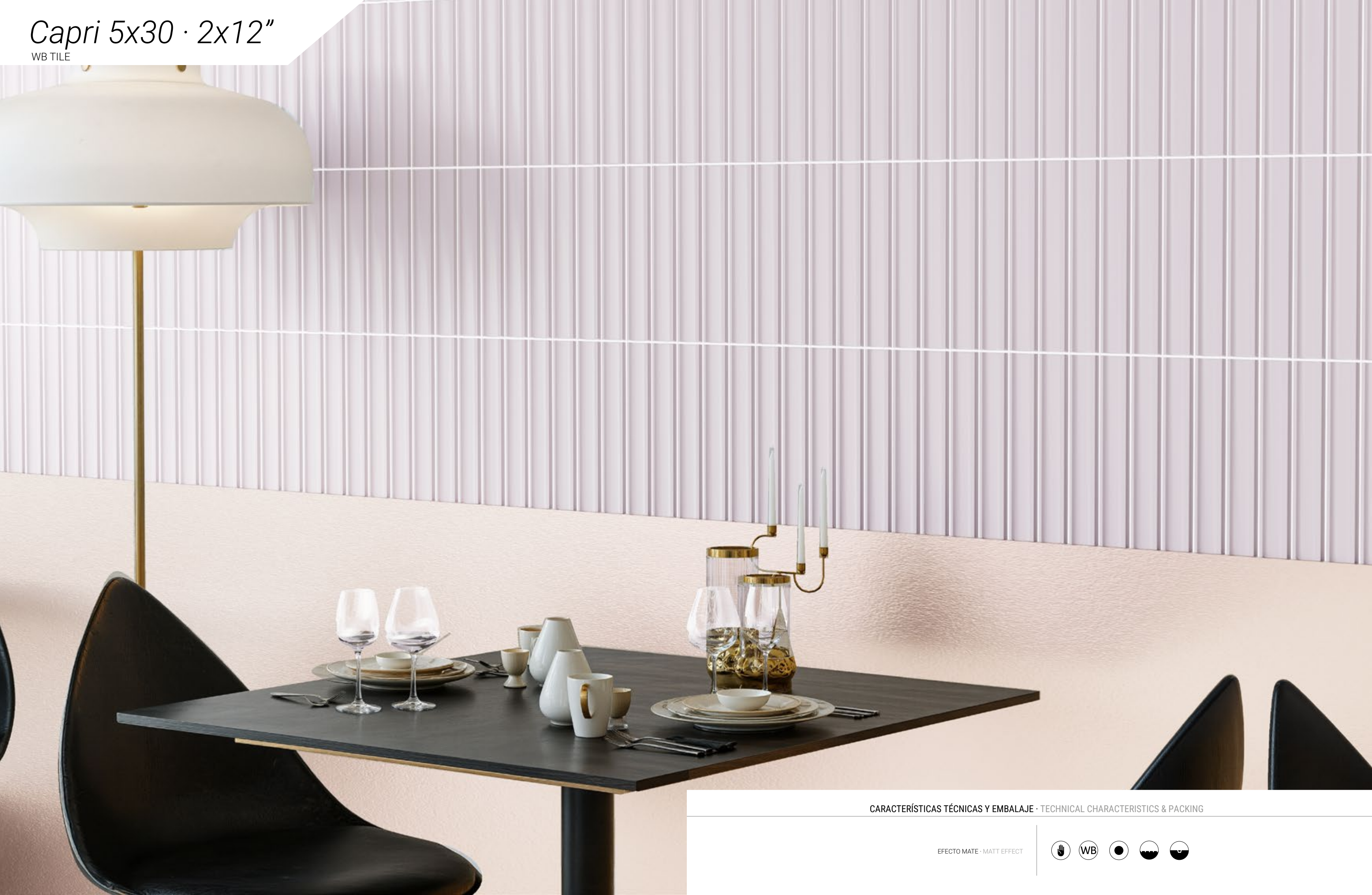
Detail



Antibes Mustard 10x10

# Capri 5x30 · 2x12"

WB TILE



CARACTERÍSTICAS TÉCNICAS Y EMBALAJE · TECHNICAL CHARACTERISTICS & PACKING

EFFECTO MATE · MATT EFFECT



# Capri Rail 5x30 · 2x12"



Trim Capri Rail White 1,5x30



Capri Rail White  
5x30 cm · 2x12"

Trim Capri Rail Marfil 1,5x30



Capri Rail Marfil  
5x30 cm · 2x12"

Trim Capri Rail Pink 1,5x30



Capri Rail Pink  
5x30 cm · 2x12"

Trim Capri Rail Oil 1,5x30



Capri Rail Oil  
5x30 cm · 2x12"

Trim Capri Rail Blue 1,5x30



Capri Rail Blue  
5x30 cm · 2x12"

Trim Capri Rail Cotto 1,5x30



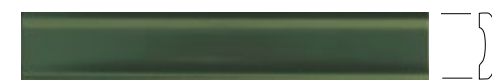
Capri Rail Cotto  
5x30 cm · 2x12"

Trim Capri Rail Bordeaux 1,5x30



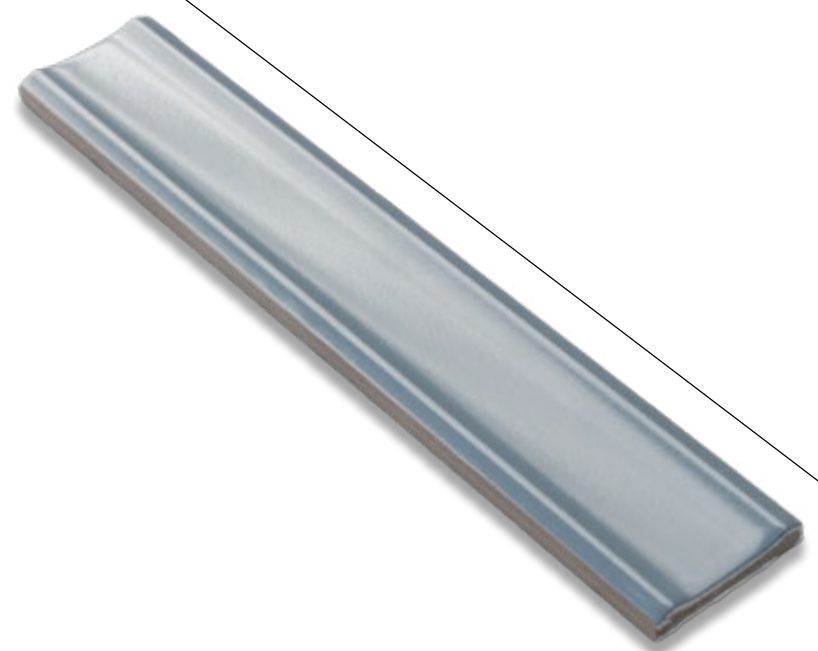
Capri Rail Bordeaux  
5x30 cm · 2x12"

Trim Capri Rail Green 1,5x30

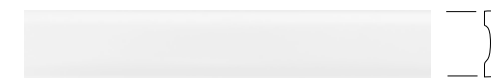


Capri Rail Green  
5x30 cm · 2x12"

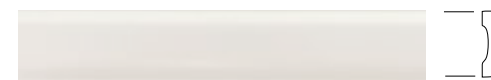
Detail



# Capri Liso 5x30 · 2x12"



Capri Liso White  
5x30 cm · 2x12"



Capri Liso Marfil  
5x30 cm · 2x12"



Capri Liso Pink  
5x30 cm · 2x12"



Capri Liso Oil  
5x30 cm · 2x12"



Capri Liso Blue  
5x30 cm · 2x12"



Capri Liso Cotto  
5x30 cm · 2x12"



Capri Liso Bordeaux  
5x30 cm · 2x12"



Capri Liso Green  
5x30 cm · 2x12"



Capri Rail Oil · Capri Rail Marfil 5x30



Toda la información aparecida en este catálogo está protegida en su totalidad por copyright, está prohibida la reproducción total o parcial de los textos, ilustraciones, imágenes y representaciones graficas sin la autorización expresa de Monopole Lab S.L.

Por cuestiones de impresión, los colores mostrados en este catálogo se deben considerar orientativos y pueden variar con respecto a las piezas originales. Las imágenes que se muestran en este catálogo son sugerencias decorativas. Monopole Lab S.L se reserva el derecho de modificar y/o suprimir las series que considere oportunas



Toutes les informations qui apparaissent dans ce catalogue sont protégées dans leur intégralité par le droit d'auteur. La reproduction totale ou partielle des textes, illustrations, images et représentations graphiques est interdite sans l'autorisation expresse de Monopole Lab S.L. Les couleurs présentées dans ce catalogue doivent être considérées comme un guide et peuvent varier par rapport aux pièces originales. Les images présentées dans ce catalogue sont des suggestions décoratives.

Monopole Lab S.L. se réserve le droit de modifier et/ou supprimer les séries qu'il juge appropriées.



All the information that appears in this catalogue is protected in its entirety by copyright. The total or partial reproduction of texts, illustrations, images, and graphic representations is prohibited without the express authorization of Monopole Lab S.L. Colours shown in this catalogue should be considered as a guide and may vary with respect to the original pieces. Images shown in this catalogue are decorative suggestions. Monopole Lab S.L. reserves the right to modify and/or delete the series it deems appropriate.

[www.monopoleceramica.com](http://www.monopoleceramica.com)



[monopole\\_ceramica](https://www.instagram.com/monopole_ceramica)



[monopole\\_ceramica](https://www.facebook.com/monopole_ceramica)



[monopole\\_ceramica](https://www.tiktok.com/@monopole_ceramica)



Monopole Ceramica



[office@monopoleceramica.com](mailto:office@monopoleceramica.com)



MONOPOLE CERÁMICA  
Carretera CV-20, km 9.  
12200. Onda, Castellón. SPAIN



(+34) 96 331 09 46

**MONOPOLE**  
CERÁMICA